



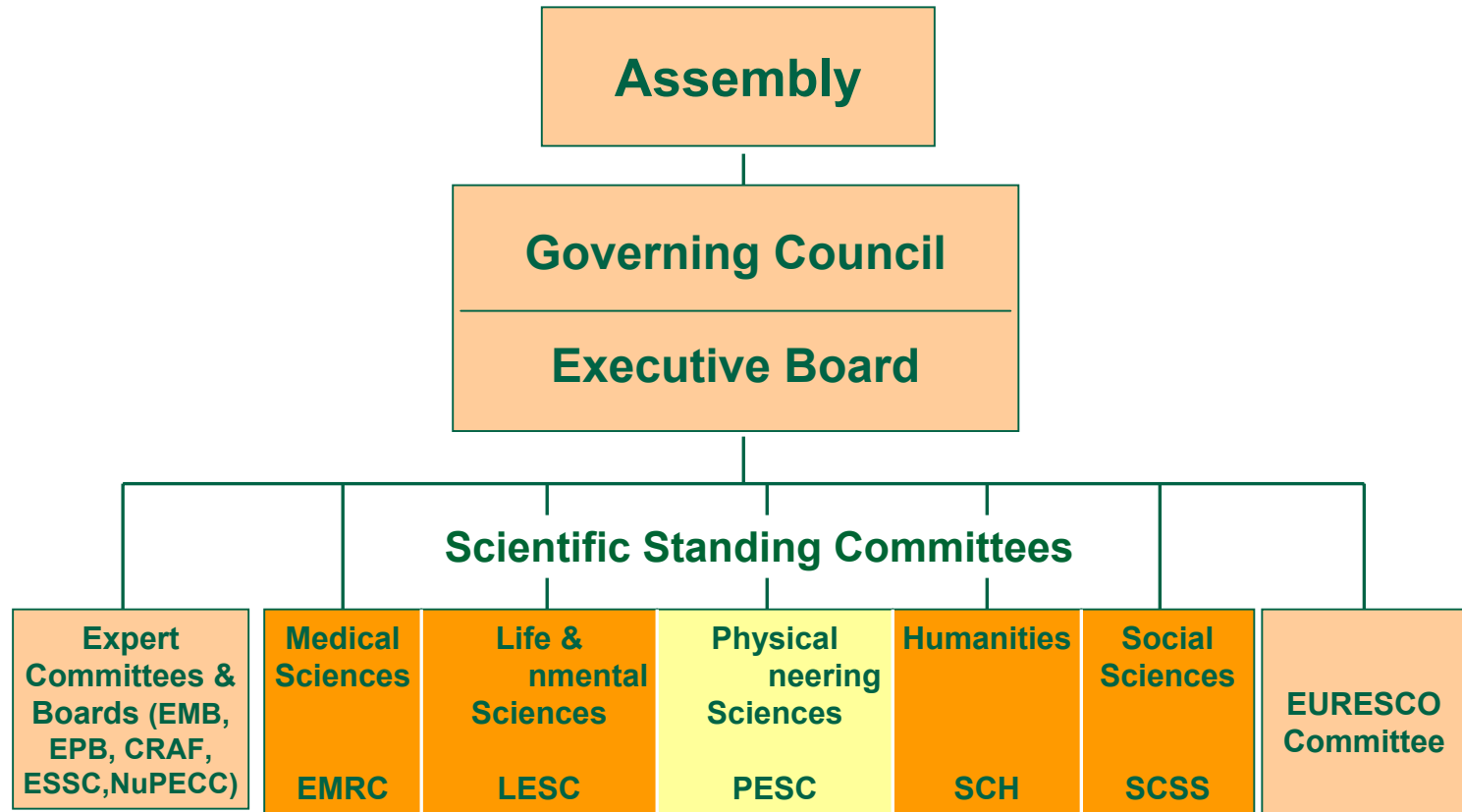


# ESF key characteristics

- **Pan-European** – 76 national research organisations from 29 countries
- **Multidisciplinary** – all disciplines covered:
  - Physical and engineering sciences
  - Life and environmental sciences
  - Medical sciences
  - Humanities
  - Social sciences
- **Main aim:** The ESF acts as a catalyst for the development of science by bringing together leading scientists and funding agencies to debate, plan and implement pan-European scientific and science policy initiatives.



# ESF structure



**2002**

**General budget : 6.6 M€**

**Including Specific funding : 17 M€ (Euresco, programmes)**

# PESC



**Scientific Chair Michel Mareschal**

**Secretary Neil Williams assisted by Marie Gruber**

**Committee: 41 scientists - CORE Group: 7 to 8 people**

**Full committee meetings: 2 meetings/year (april and october)**

- **Scientific policy issues – relation with other bodies-ERC**
- **Various ESF actions (launching of Eurocores, forwardlooks..)**
- **Evaluation procedure (selection/evaluation)**

**Core: 4 meeting/year (January, June + before full PESC meetings)**

- **Prepare decisions for PESC**
- **Meets members organisation representatives to discuss actions**



# ESF instruments and PESC

- **Conferences**
  - Exploratory Workshops : 14 in 2003 (for PESC)
  - EURESCO (EC funding till 2003): 30/year
- **Scientific activities**
  - Networks: 7 in 2003
  - Scientific Programmes: 22 in 2003 (for PESC)
  - EUROCORES : 1 in 2003 for PESC (new scheme)
- **Scientific policy**
  - Forward Looks
  - Research Infrastructure Activities
  - Science Policy Studies

# Programmes



In the PESC remit 22 in 2003

- **Main features**

- 5 years, typically 100 people/10 countries
- Workshops, conferences, fellowships, schools,
- 90 - 250 k€/year (Funded directly by ESF Member Orga., (“à la carte”))

- **Evaluation**

- **Criteria**
  - High scientific quality “Non-linear” value added through European cooperation
  - Balance of scientific fields in total set Beneficial for a wide range of European countries
  - Satisfactory managerial and financial resources available
- **Open call: Evaluation by referees (success rate: 10-15%)**
- **Mid term and final review sent to member organisations**

# EUROCORES



In the PESC remit 1 in 2003 (3 others in discussion)

- **Main features**
- Build on existing structures and maximise their value through collaboration while leaving funding 'ownership' with the national agencies.
- Operate through a common call for proposals and a single peer review system. (SC + referees)
- Money for fellowships, but also research
- **One in 2003: Self Organized Nanostructures**
  - 23 agencies from 20 countries
  - 57 proposals (about 15 funded for 3 years)
  - About 15 M€ payed by member states/organisations
- **Partial funding by EC (20 M€ for 2003-2006)**



# Exploratory Workshops

14 PESC workshops funded in 2003

- **Normally one-off specialist meetings**
- **'Spearheading' topics**
- **'Bottom-up' through Open Call**
- **Occasionally 'top-down' on key topics**
- **May lead to ESF or other networks;  
*à la carte* programmes; FP proposals;  
position statements**
- **25-30 scientists involved**





# Scientific Forward Looks

- **Medium - long term scientific perspectives**
  - **Multidisciplinary topics viewed from a European level**
  - **Bring together scientists and policy makers from ESF Member Organisations**
  - **Wide consultation**
  - **Major reports and action plans should result**
- **NSIT** (Nanosciences and long term evolution of information technology)
- **Urban Science**